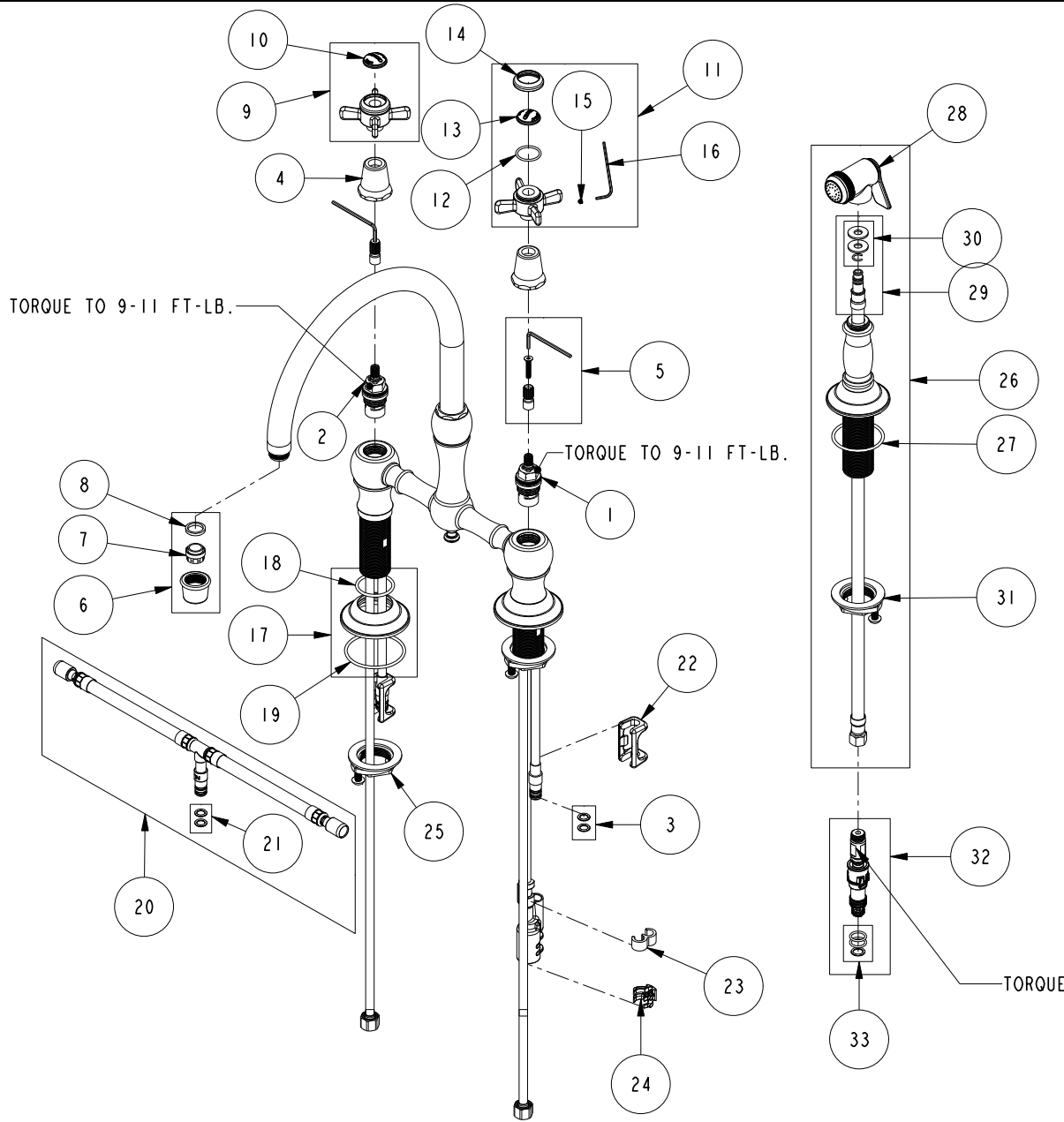


REPLACEMENT PARTS



ITEM	PT/ASSY	SPECIFY FINISH	DESCRIPTION
1	1-005		C/S VALVE CARTRIDGE - COLD
2	1-006		C/S VALVE CARTRIDGE - HOT
3	1-399		O-RING KIT FOR SPOUT PEX CONECTION
4	12259	YES	HANDLE BONNET - TUB FILLER
5	10-304		CARTRIDGE STEM ADAPTER KIT
6	2-964	YES	AERATOR ASSEMBLY
7	11916		AERATOR JR. INSERT-1.8 GPM
8	91500		GSKT, .578 ID X .728 OD X .102 THK EPDM
9	2-114	YES	THIN BLADE X - HANDLE HOT
10	10816		PORC BUTTON - CHAUD (HOT)
11	2-115	YES	THIN BLADE X - HANDLE COLD
12	91023		O-RING, #2- 019, EPDM, 65-75 DURO, NSF 61
13	10815		PORC BUTTON - FROID (COLD)
14	10814	YES	BEZEL
15	92000		SCREW 8 - 32 X 1/8 SS
16	10192		HEX KEY TOOL, #8 5/64
17	20-701	YES	ESCUTCHEON ASM.
18	91305		O-RING, #2- 124, EPDM, 65-75 DURO, NSF 61
19	91752		O-RING, #2- 137, EPDM, 50 DURO
20	1-777		TEE HOSE ASSY
21	1-399		O-RING KIT FOR SPOUT PEX CONECTION
22	91568		RETAINER CLIP
23	91811		TEE HOSE CLIP
24	91812		DIVERTER CLIP
25	1-393		1-1/8 18 UNEF MOUNTING KIT
26	129	YES	KITCHEN SPRAY HEAD
27	91762		O-RING, #2-132, EP, 50 DURO - GREY
28	2-119B	YES	SPRAY HEAD ASM
29	1-778		SIDE SPRAY HOSE ASSY
30	1-397		SIDE SPRAY WASHERS
31	1-393		1-1/8 18 UNEF MOUNTING KIT
32	10-303		PEX DIVERTER ASM FOR SIDE SPRAY HOSE
33	1-398		O-RING KIT FOR SIDE SPRAY PEX DIVERTER

KITCHEN BRIDGE FAUCET W/ SPRAY
9456

REV N EN-4806 04/16/24 APPROVED KN

NEWPORT BRASS.

t: 949.417.5207 | www.newportbrass.com